

The Best Things to do in the Suburbs of Tokyo

**Nature,
Anime,
History,
Festivals,
Food**

Discover and Experience
Sayama Tea

All Anime Fans
aboard the Seibu Railway

Head to Mountains
and Hills on the Seibu Line

Spend an amazing day at
an amusement park for some
“only in Japan” experiences

Seibu Line's
- Must Do & See Spots -

A Town of History and Festivals:
Kawagoe & Chichibu



Seibu Railway
makes it
happen.

Get around the Seibu Line with the „All-you-can-ride Pass“

With the Seibu 1Day Pass and the Seibu 2Day Pass you can hop on and off the Seibu Line as often as you want and experience culture to the fullest. Go to the suburbs or visit the sacred places of Kawagoe and Chichibu, where you can enjoy the charm of traditional culture of the Edo Period to the fullest. This ticket is the best partner for tourists in Japan.

Ticket Information Price and type

			
SEIBU 1Day Pass 1,000 yen	SEIBU 1Day Pass + Nagatoro 1,500 yen	SEIBU 2Day Pass 2,000 yen	SEIBU 2Day Pass + Nagatoro 3,000 yen

Valid on the Seibu Line or the Seibu Line + Chichibu Railway Line within the stated area
 *Seibu Tamagawa Line is not included
 *Free of use between Nogami Station and Mitsumineguchi Station of Chichibu Railway
 *Elementary school students and younger pay half of the above-mentioned price
Purchase conditions: You must be in possession of a foreign passport or a holder of the "SEIBU PRINCE CLUB emi" member's card.
 *Please refer to the website (<https://emi.seibugroup.jp/en/>) for further information regarding the "SEIBU PRINCE CLUB emi" member's card



Where to buy

- **SEIBU Tourist Information Center Ikebukuro** Hours: 8am – 6pm (no closing days)
 - Sightseeing information about the Ikebukuro area and Seibu Line
 - Language support: Chinese & English (daily), Korean (occasionally)
- Tickets available from: 8am – 3pm
- Seibu Railway tickets, Keisei Railway "Skyliner Value Ticket" for Narita Airport



• **Ikebukuro Station**
1F limited-express ticket counter
Hours: 7am – 8pm



• **Ikebukuro Station**
B1 ticket center
Hours: 7am – 8pm



• **Seibu Shinjuku Station**
limited-express ticket counter
Hours: 7am – 8pm

This is also a great value!

Visit the Best Photo Spots!

Take pictures in a park designed after a northern European fairytale ▶ Plenty of restaurant options at the outlet mall ▶ Watch a baseball game at the stadium ▶ Return home

SI 01 Ikebukuro St. ▶ **SI 25** Motokaji St. ▶ **SI 23** Irumashi St. ▶ **SI 41** Seibukyūjō-mae St. ▶ **SI 01** Ikebukuro St.
463 yen + 174 yen + 237 yen + 370 yen = General 1,244 yen / With pass 1,000 yen

Have fun with the whole family!

Enjoy the season's view at the Showa Memorial Park ▶ Have fun at the amusement park ▶ Get a taste of real Japanese family food at Nogata's shopping district ▶ Return home

SS 01 Seibu-Shinjuku St. ▶ **SS 34** Musashi-Sunagawa St. ▶ **SY 01** Seibu-yūenchi St. ▶ **SS 07** Nogata St. ▶ **SS 01** Seibu-Shinjuku St.
401 yen + 237 yen + 299 yen + 174 yen = General 1,111 yen / With pass 1,000 yen

Let's unwind!

Visit "little Edo" in Kawagoe ▶ Relax in an onsen and taste Japanese cuisine at Niwa no Yu ▶ Return home

SS 01 Seibu-Shinjuku St. ▶ **SS 29** Hon-Kawagoe St. ▶ **SI 39** Toshimaen St. ▶ **SI 01** Ikebukuro St.
494 yen + 432 yen + 174 yen = General 1,100 yen / With pass 1,000 yen



Attention! LAIMO Design Train



©Cherng, Licensed by HIM Music

To commemorate the 2nd anniversary of an agreement between the Seibu Railway and Taiwan Railway Administration Bureau, artist "Cherng" designed the "LAIMO" design train which operates on the Seibu Shinjuku Line. If you are lucky, you can ride on that train until Kawagoe.

Operating time:
March 18th, 2017 - End of December 2019

Attention! Traveling Restaurant-fifty two seats of happiness

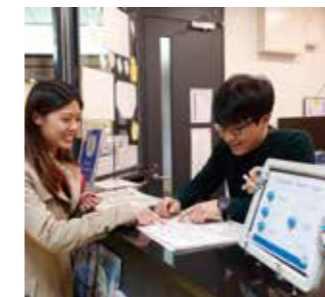
Famous architect Kengo Kuma designed the interior for the "Traveling Restaurant-fifty two seats of happiness" that runs between Seibu-Ikebukuro Station – Seibu-Chichibu Station, Seibu-Shinjuku Station – Seibu-Chichibu Station and Seibu-Shinjuku Station – Hon-Kawagoe Station. Be in a state of pure bliss riding the luxurious wagon with gourmet meals using seasonal ingredients while observing the beautiful scenery.



Price: Brunch Course 10,000 yen, Dinner Course 15,000 yen *Includes train fare and course meal (tax included)
Operation Schedule: Temporary train, scheduled to operate 100 days per year mainly on holidays and weekends
Reservation: For more information, please visit (<https://www.seiburailway.jp/railways/seibu52-shifuku/>) *as of April 1st, 2017

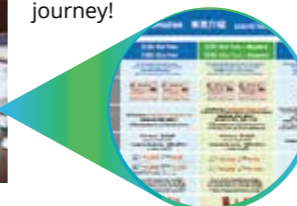


Attention! Illustrated Ticket Information Board



Seibu Railway created a ticket information board in Chinese, English and Thai, which helps tourists easily to purchase all kinds of tickets. The board features details about the validity period, the use, and the price of the tickets.

Don't worry if you are not able to understand Japanese, since this new system is the easiest way to start your journey!



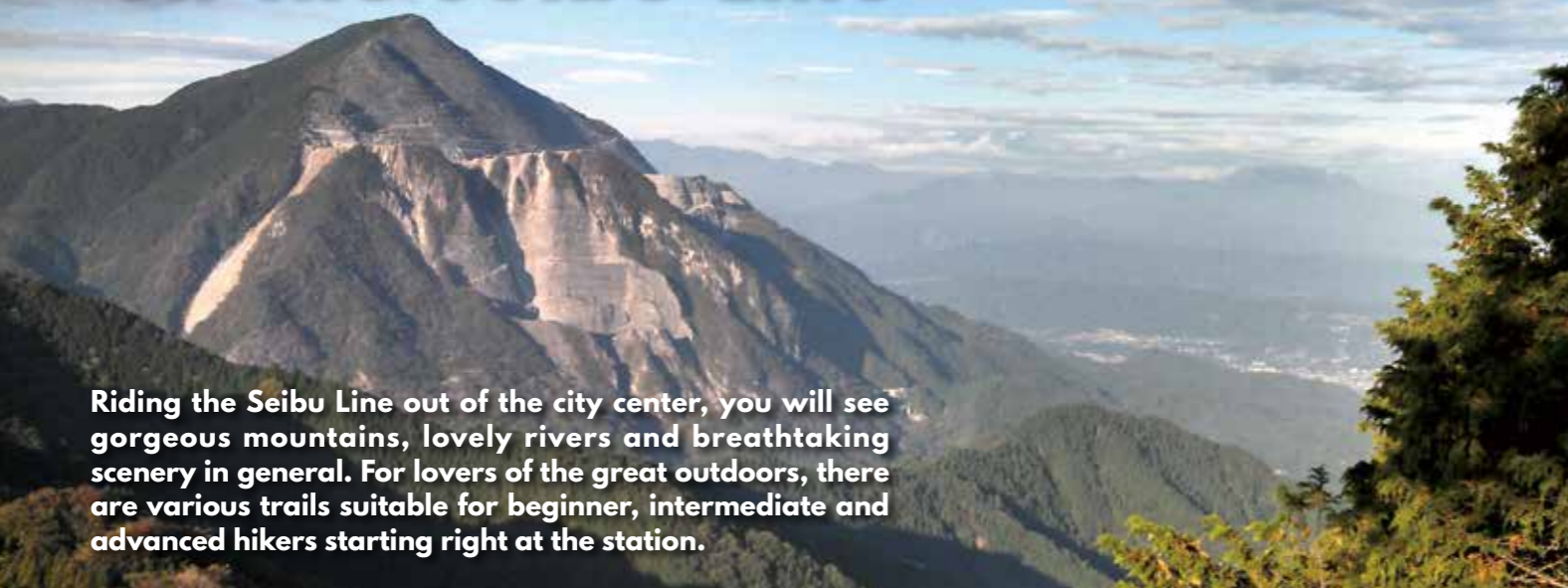
Attention! Keisei Skyliner Value Tickets



Buy the "Sky Value Ticket" at the "SEIBU Tourist Information Center Ikebukuro" on the same day as going to Narita Airport from central Tokyo. You can reach Narita Airport from Keisei Ueno Station or within 36 minutes from Nippori Station.

Price: Adults 2,200 yen (270 yen off the original price), Children 1,100 yen (140 yen off the original price) **Validity period:** Only valid on the day of purchase
Purchase an "exchange voucher" and exchange it for a Skyliner ticket headed for Narita Airport at Keisei Ueno Station's or Nippori Station's JR ticket gate at the Skyliner ticket counter.

Head to Mountains and Hills on the Seibu Line



Riding the Seibu Line out of the city center, you will see gorgeous mountains, lovely rivers and breathtaking scenery in general. For lovers of the great outdoors, there are various trails suitable for beginner, intermediate and advanced hikers starting right at the station.

Mt. Futago-yama & Mt. Takekawa-dake Route Enjoy some panoramic views



Level: for experienced hikers

Move from view to view as you make your way across mountainous areas, enjoying a new, breathtaking view with every stop. If this sounds appealing, then the forests near Mt. Futago-yama are waiting for you. At the top of Mt. O-dake, you can enjoy a beautiful view of Chichibu. When making your way down, you will find plenty of winding roads near rocky areas. Be careful, though, as the way down can be steep at some points!

Yokoze Station -> 15-min by taxi -> Ichi no Torii -> 50min -> Tsumasaka Pass -> 60min -> Mt. Takekawa-dake -> 20min -> Mt. Tsutaiwa-yama -> 55min -> Mt. Yake-yama -> 65min -> Mt. O-dake -> 10min -> Mt. Me-dake -> 40min -> Sengen Jinja Shrine -> 40min -> Sengen Jinja Shrine Torii -> 10min -> Ashigakubo Station (Seibu Chichibu Line) Total: 5hrs 50min (not including taxi)

Oku Musashi's Ancient Temple Route See temples off the beaten track



Go on a temple adventure and see something new with every step! Southwest of Agano Station you will find a great hiking trail that leads to some of the most memorable temple visits. Make stops at Ne no Gongen (Tenryu-ji Temple) to see giant waraji (straw sandals), visit Takedera Temple's beautiful lush foliage and relax at Hoko-ji Temple. This route is for those who want

Level: Medium



Agano Station (Seibu Ikebukuro Line, Seibu Chichibu Line) / Hoko-ji Temple -> 30min -> Togo Park -> 45min -> Asami Chaya -> 50min -> Ne no Gongen (Tenryu-ji Temple) -> 40min -> Mameguchi Pass -> 30min -> Takedera Temple -> 50min -> Kodono bus stop Total: 4hrs 5min

Stroll around the red spider lilies field; Koma no Sato

A relaxing walk in the countryside for Kinchakuda Manjushage



Level: Easy to do with children

Koma Station -> 5min -> Koma Stone Age Village -> 45min -> Shoden-in Temple -> 5min -> Koma Jinja Shrine / Komake Residence -> 15min -> Nonomiya Jinja Shrine -> 30min -> Manzo-ji Temple -> 10min -> Aiai Bridge -> 5min -> Kinchakuda Manjushage Park -> 15min -> Suiten no Hi (water and sky monument) -> 5min -> Koma Station Total: 2hrs 15min

Culture, flowers, shrines, temples and nature: If you want a combination of all this, simply head to Koma Station. See manjushage (red spider lilies), cherry blossoms and various other flowers in their respective seasons blooming in a pretty park bordering the Komagawa River. The best season for manjushage is from mid-September to the beginning of October. After walking along the pouch-shaped rice field (kinchakuda) that encompasses the park, breathe in unique culture at shrines that carry a history related to Korea. Finally, make your way to the Aiai-Bridge; it curves beautifully and is one of Japan's longest wooden truss bridges.

Mount Tenran-zan route An easy hike with an excellent view



Level: Beginner

Hanno Station (Seibu Ikebukuro Line) -> 20min -> Hannogawara (riverbed) -> 40min -> Azuma-kyo (gorge) -> 1min -> Do-re-mi-fa Bridge -> 18min -> Ontake Hachiman Jinja Shrine -> 5min -> Mt. Tonosu-yama -> 60min -> Amagoi Pond -> 10min -> Mikaeri Hill -> 10min -> Mt. Tenran-zan -> 10min -> Nonin-ji Temple -> 3min -> Hanno-shi Kyodo-kan -> 1min -> Suwa Hachiman Shrine -> 5min -> Kanon-ji Temple -> 5min -> Hanno town -> 15min -> Hanno Station Total: 3hrs 23min

Hiking this hill is a fun challenge that anyone can enjoy! Instead of a regular trail, Mt. Tenran-zan has exciting pathways that curl upwards, surrounded by vegetation. The top is an easy-to-reach goal and rewards you with a spectacular wide-open view. The path then leads you to interesting nature spots and temples. The hike ends on a cultural note with a visit to shrines and temples. After hiking, you can visit Hanno City, which has an authentic shotengai (traditional Japanese shopping street). From small shops to hidden corners, city-dwellers will be positively delighted by Hanno!

Sayama Park and Lake Tama Come visit magical forest

Famous animation directors have used Sayama Hills as a setting for their movies. Within this all year round beautiful scenery of shallow hills and valleys, a wide variety of flora and fauna flourished undisturbed in harmonious surroundings. Sayama Hills consists of five municipal parks providing various walking trails for a short or full day nature experience. Visit the many historical shrines and temples spread throughout the area within Japan's unique nature. The trails around Lake Tama and Lake Sayama are the best places for your magical encounter with creatures famous from popular movies that live in the forest.



Sayama Park - Park Center

Hours: 8:30am - 5:30pm (no closing days) Address: 3-17-19 Tamako-cho, Higashimurayama-shi, Tokyo

Discover & Experience Sayama Tea

Feel the Charm of Fields near the Center of Tokyo

Green tea, an absolute staple of Japanese culture, has evolved into an art into itself. The Sayama area is one of the “three big tea plantations” in Japan, the others being Shizuoka and Uji(Kyoto),but many people don’t know that this large tea production area is so close to Tokyo. It is said that this tea has “the color of Shizuoka, the scent of Uji and the taste is Sayama”.

The Sayama area holds tea festivals during the picking season to celebrate the fresh batch of leaves. However, you can enjoy this tea all year round at various restaurants and tea shops. Be surprised at the remarkable versatility of Japanese tea!



Hours: 9am – 5pm (last admission at 4:30pm) **Closed:** Monday, unless it is a national holiday **Admission:** 200 yen (adults), 100 yen (high school and university students), 50 yen (elementary and junior high school students) **Address:** 100 Nihongi, Iruma-shi, Saitama **Access:** 20-min bus ride from Irumashi Station (Seibu Ikebukuro Line) to Irumashi-hakubutsukan bus stop

Restaurant Ochakko Salon Issen

Japanese-style meals prepared with Sayama tea

Be amazed by all the wonderful culinary creations you can make with tea. The owner of Issen talks lovingly about his menu and is very enthusiastic in letting you try the different tea variations. Discover tea potato salad, tea korokke (deep-fried-potato based dish) made with fresh vegetables, as well as a variety of tea-themed desserts. Any respectable tea-lover can’t afford to miss this unique and educational experience.



Hours: 10:30am – 6pm
Closed: Monday and 4th Tuesday of the month, unless it is a national holiday
Address: 100 Nihongi, Iruma-shi, Saitama On-site restaurant at the Iruma City Museum ALIT
Access: 20-min bus ride from Irumashi Station (Seibu Ikebukuro Line) to Irumashi-hakubutsukan bus stop

Iruma City Museum ALIT

Discover the history of Tea

Iruma City is famous for its production of Sayama tea. A “tea museum” has been added to the Iruma City Museum ALIT, where visitors can immerse themselves in the world of Sayama tea as well as learn about other domestic and foreign teas. Tea ceremonies using matcha (powdered green tea) are well known, however, the sancha-do tea ceremony uses full-leaf tea. The museum features a reconstructed tea ceremony room, as well as an area with tools like pots and cups which are used during this traditional event. After your visit, treat yourself to different sorts of Sayama tea or get your hands on some exclusive tools for your own sencha-do!

Matcha Station

Matcha on the go

If you need your daily dose of matcha sweets, you can make a quick stop at Matcha Station. Besides offering delicious takeout parfaits, this shop also sells manmaru matcha, a variety of obanyaki (a round confection made from batter with filling baked inside). Choose from fillings such as matcha cream with sweet azuki beans or custard cream. “Tokoron,” the official mascot of Tokorozawa, is printed on the fluffy snacks. Wrapped up and ready to go, these obanyaki are the perfect original souvenir from Tokorozawa!



Hours: 9am – 9pm
Address: Emio Tokorozawa, 1-14-5 Kusunokidai, Tokorozawa-shi, Saitama
Access: Inside the Tokorozawa Station Building (Seibu Ikebukuro Line, Seibu Shinjuku Line)

Tea Café – Musashi Rikyu

Tea Expertise and Tea Sweets

This café is located inside Araien Honten, a tea shop that has been around long enough to offer quality tea worthy of winning the Emperor’s Cup Award.

Here you will find Sayama tea cultivated at their own tea plantation, where only organic fertilizers are used. Besides the tea itself, you can find all the tools needed to brew your own perfect cup!

If you want to enjoy tea-based desserts while sitting on tatami mats in a café based on a Japanese tea room, look no further. Besides bringing you the classics such as anmitsu (jelly-based dessert) and warabi mochi (mochi made from warabi starch) you can also try matcha ice cream such as parfaits and matcha avogado (matcha over ice cream). If you’re not a sweet tooth, try their delicious tea-based soba noodles during lunchtime (11:30am – 3pm).

Hours: 11:30am – 6pm (last order at 5:30pm) **Closed:** Second Wednesday of the month **Address:** 1-15-5 Kotesashi-cho, Tokorozawa-shi, Saitama
Access: 3-min walk from Kotesashi Station (Seibu Ikebukuro Line)



Hours: 9:30am – 6pm (no closing days) **Workshops:** 10am~ / 1:30pm~ (reservation required)
Address: 25-2 Kita-iriso, Sayama-shi, Saitama **Access:** 12-min by car from Sayamashi Station (Seibu Shinjuku Line)

Miyano-en Time for Tea and Fun

This store, featuring expert advice and a fascinating history of tea approval standards, was established in 1869. Immerse yourself fully in the world of tea by participating in picking events (May to June) and dressing up in a traditional ocha musume (tea girl) outfit. More than just a shop, Miyano-en is the closest location to Tokyo where you can get a taste of authentic Japanese teas. Join in a hands-on tea rolling experience, learn how to pack tea by yourself and enjoy yummy sweets made from Sayama tea. Tea workshops and tastings can be arranged, where you will discover the unique and refreshing taste of Sayama tea.



If you were looking for anything tea-related:

Sayama Tea Cola

A new way to enjoy tea

Utilizing the natural sweeteners of tea leaves, this carbonated drink was invented to promote Sayama tea and features a refreshing aftertaste. This innovative refreshment shows again that tea is a tremendously versatile ingredient.



Masudaen Honten

Hours: 8:30am – 8pm,
Tea salon from 10am – 5pm
Address: 1-12-20 Toyooka, Iruma-shi, Saitama
Access: 13-min walk from Irumashi Station (Seibu Ikebukuro Line)

Sayama Tea Langue de chat

Sayama’s top cookies

This delicious cookie uses 100% Sayama tea and has won the ITQI Superior taste Award ★★. Bring home this perfect souvenir from Saitama prefecture!

Morita-en **Hours:** 9am – 6pm **Closed:** Sunday
Address: 5-12-3 Ogimachiya, Iruma-shi, Saitama
Access: 10-min by car from Irumashi Station (Seibu Ikebukuro Line)



Sayama Tea Jam

For the tea-loving sweet tooth

Use this tasty tea jam to top not only your bread, but also ice cream and other sweets. You can even use it when baking to make a tasty filling for your creations. You can buy the Sayama Tea Jam at Ochakko Salon Issen



Tea Pen Bring your tea wherever you go!

This handy pen is not a real writing tool – actually, it contains powdered Sayama tea! Now you can treat yourself to a delicious cup wherever you go! One pen makes about 15 cups. Get the pen at Araien Honten and Matcha Station.



Spend an amazing day at an amusement park for some “only in Japan” experiences

Japan has dozens of theme and amusement parks (including global brand names such as Disney and Universal Studios), and there are also some very unique ones on the Seibu line. Spend a whole day at an amusement park for some “only in Japan” experiences, discover history, or relax at a spa.

Seibuen Yuenchi *Fun for the whole family together with Hello Kitty*

©1976, 2017 SANRIO CO., LTD. APPROVAL NO. SP571973



Hours & Closing Days: Differ every day, check their website for details
Admission: One-day Free Pass 3,300 yen (adults); 2,800 yen (children)
Address: 2964 Yamaguchi, Tokorozawa-shi, Saitama-ken
Access: Directly at Seibu-yuenchi Station (Seibu Tamako Line)

This amusement park is designed for all ages and offers a broad palette of areas to discover. Meet Japan’s most iconic character, Hello Kitty, at Fairytale Town, along with her other friends, who are featured in rides and souvenirs. There is even a variety of Hello Kitty lunch boxes available should you be hungry. During summer, dive into the pool or watch fireworks in the evening; during winter, enjoy the amazing illumination events at night. Pick up some limited-edition merchandise at the souvenir shop or relax at the restaurants to get ready for your next adventure!



Met Life Dome *The base of Baseball*



This huge indoor stadium is used mainly for baseball games and is the home field for Nippon Professional Baseball’s Saitama Seibu Lions. Baseball is one of Japan’s most practiced sports and is loved by all generations. Get a ticket to a game and experience the exhilarating, fired-up atmosphere spread from the fans! Don’t forget to check out the merchandise shop, which provides a wide range of souvenirs for young and old fans alike!

Address: 2135 Kami-yamaguchi, Tokorozawa-shi, Saitama
Access: 4-min walk from Seibukyūjō-mae Station (Seibu Sayama Line & Seibu Yamaguchi Line)

When coming back from Seibuen, don’t forget to stop by...

Mitsui Outlet Park Iruma *Shopping Extravaganza*



A shopping paradise right outside of Tokyo, Mitsui Outlet Park Iruma has about 210 stores to make any shopper’s heart flutter! Besides offering the present trends and most fashionable brands, there are also plenty of services for foreigners, such as foreign language consulting (call centers) and free Wi-Fi. End your shopping spree at one of the many restaurants offering good food that outclasses any regular food court!

Hours: 10am – 8pm (restaurants from 11am – 9pm (Mon. – Fri.) & 11am – 10pm (Sat.), food court 10:30am – 9pm)
Address: 3169-1 Miyadera, Iruma-shi, Saitama
Access: 15-min bus ride from Irumashi Station (Seibu Ikebukuro Line)

The best day-trip hot spring experience



Toshimaen & Niwa no Yu

Ride some roller coasters, enjoy other thrilling or relaxing rides, and visit the exciting waterpark in summer! During sakura season, there are picnic areas where you can relax under 500 cherry blossom trees –and be sure not to miss the fabulous light up events at night!

Niwa no Yu, the hot spring resort located right next to the Toshimaen, offers a full range of relaxing facilities on two floors. Unwind in hot springs while enjoying the magnificent view of the Japanese garden right in front of you. Spa, sauna, pool and Jacuzzi areas are available as well. (Be aware that tattoos are not allowed.)

Toshimaen **Hours & Closing days:** Differ every day, check their website for details **Admission:** 1,000 yen (junior high school students and older), 500 yen (children); separate fee for rides and attractions **Address:** 3-25-1 Koyama, Nerima-ku, Tokyo **Access:** 1-min walk from Toshimaen Station (Seibu Toshima Line)

Niwa no Yu **Hours:** 10am – 11pm (last admission 10pm) **Admission:** 2,310 yen **Address:** 3-25-1 Koyama, Nerima-ku, Tokyo **Access:** 1-min walk from Toshimaen Station (Seibu Toshima Line)

Miyazawa Lake Onsen - Kirari Bettei

A hot spring with a view



For a relaxing day with the best food and spa, look no further. If you haven’t tried Japanese bathing culture yet, Kirari Bettei provides everything in one place: open-air baths, large indoor baths and a bedrock bath with a splendid view of Lake Miyazawa. Kohan Saryo, a restaurant using only local produce and seasonal ingredients, and an authentic *soba* noodle restaurant, Gensuan, are at your service. Stroll through the onsen grounds wearing a *yukata*, a light cotton kimono available for rent and let your mind feel at ease. Lake Miyazawa, surrounded by hills, has become a very popular recreational area over the years.

Hours: 9am – midnight **Admission:** 1,000 yen for standard course
Address: 27-49 Miyazawa, Hanno-shi, Saitama **Access:** 10-min bus ride from Hannō Station (Seibu Ikebukuro Line)

Edo-Tokyo Open Air Architectural Museum

See history built before your eyes



Enter a time warp and discover what life was like during the early Edo (1603 – 1868) and post-World War II periods. You can enter most of the 30 buildings and even visit an authenticity-themed handmade noodle restaurant, called Musashino Udon, which serves local delicacies of the Tama area. The museum shop offers many interesting souvenirs, such as an inventive 3D pop-up frame featuring Japanese designs and miniatures of historical buildings.

Hours: 9:30am – 5:30pm (Apr. – Sep.), 9:30am – 4:30pm (Oct. – Mar.) **Closed:** Monday
Admission: 400 yen (adults), 320 yen (university students), 200 yen (high school and junior high school students); free for junior high school students residing or studying in Tokyo, as well as for elementary and pre-school students
Address: 3-7-1 Sakura-cho, Koganei-shi, Tokyo
Access: 5-min bus ride from Hana-Koganei Station (Seibu Shinjuku Line)

Tokorozawa Aviation Memorial Park *Unique park that both kids and adults can enjoy*



On the former ground of Japan’s first airbase (opened in 1911) is Tokorozawa’s Aviation Memorial Park. The park includes a museum inside a hangar that houses several aircraft which are also accessible from the inside. Turn yourself into a pilot from the past and get a commemorative picture taken! Another highlight is a number of flight simulators, each of which turn any visit into a once-in-a-lifetime experience. After touring the museum, stop by the Saishou tea garden. Cross the quaint little bridge to the teahouse and enjoy the view over the garden from inside while sipping a cup of green tea or matcha and sampling a variety of typical Japanese sweets. Get the full Japanese experience at a single location!

Tokorozawa Aviation Memorial Park **Address:** 1-13 Namiki, Tokorozawa-shi, Saitama **Access:** 1-min walk from Kōkū-kōen Station (Seibu Shinjuku Line)
Tokorozawa Aviation Museum **Hours:** 9:30am – 5:00pm **Closed:** Monday **Admission:** 510 yen (adults), 100 yen (elementary and junior high school students)
Saishou Tea Garden **Hours:** 10am – 4pm **Admission:** Free (430 yen for the green tea or matcha & Japanese sweets set)

All Anime Fans Aboard the Seibu Line!

Whether you're new to the anime (hand-drawn or computer animation) world or have been an avid fan for years, the Seibu Railway Line is the absolute hub for discovering its origin. While many people aren't aware that the roots of the anime industry are located along one railway track, actually both new and old studios as well as anime pilgrimage spots are waiting for your visit.

Tokiwaso

The origin of all manga

Introducing the mecca that every manga (Japanese-style comics) fan should visit! Tokiwaso is the old residency where the pioneers of manga such as Osamu Tezuka (Astro Boy) and Fujiko F. Fujio (Doraemon)



lived and penned their now iconic masterpieces. Although the building itself is no more, there are many memorial sites around the area and a small museum (Tokiwaso-dori Oyasumidokoro) near the old site, featuring a reconstruction of one of the resident's rooms. Take a trip to the very root of all manga!

Hours: 10am – 6pm (Apr. – Sep.), 10am – 5pm (Oct. – Mar.) **Closed:** Monday **Admission:** Free
Address: 2-3-2 Minami-nagasaki, Toshima-ku, Tokyo **Access:** 15-min walk from Shiinamachi Station (Ikebukuro Station)



Oizumi Gakuen Anime Gate

Your heroes in real life

Oizumi in Nerima-ku is the hometown of Toei Animation and its primary station, Oizumi-Gakuen, showcases iconic characters from animation and manga stories such as Astro Boy, Lum and Maetel. Toei was the major animation studio in Japan creating feature animations for movie theaters, and gave Nerima the name of "birthplace of Japanese animation".

Address: 5 Higashi-oizumi, Nerima-ku, Tokyo
Access: Right outside of Oizumi-Gakuen Station-North Exit (Seibu Ikebukuro Line)

©ANO HANA PROJECT



Chichibu anime pilgrimage (Ano hana)

Chichibu sees visits from a lot of anime fans. It is known for being the setting of the hit anime series "Anohana: The Flower We Saw That Day". At Seibu Chichibu Station, you can pick up a map marking all notable locations such as Chichibu Bridge, Jourin-ji Temple or Chichibu Jinja.



Suginami Animation Museum

Learn all about anime is origins

If you've always wondered about how your favorite animations are made, just head down to the Suginami Animation Museum. The exhibition shows the extensive history of Japanese animation, how it's made and even has some marvelous interactive displays. Try dubbing your own anime, tracing over a lightbox or read manga and watch anime for free in the museum library. After a visit, the fascinating world of Japanese animation will hold no more secrets for you!

Hours: 10am – 6pm **Closed:** Monday **Admission:** Free **Address:** Suginami Kaikan 3F, 3-29-5 Kamiogi, Suginami-ku, Tokyo **Access:** 5-min bus ride from Kami-Igusa Station (Seibu Shinjuku Line) to Ogikubo Keisatsu-mae bus stop / 20-min bus ride from Shakujii-koen Station (Seibu Ikebukuro Line) to Ogikubo Keisatsu-mae bus stop



©SOTSU·SUNRISE

Gundam Monument

An icon of popular Japanese subculture

The headquarters of Sunrise Studios, the creators of Gundam and various other anime, are located near Kami-igusa Station. It seems only fitting that a bronze, three-meter high monument stands in the vicinity, almost as if keeping a watchful eye on passersby.

Access: Directly outside Kami-Igusa Station (Seibu Shinjuku Line)



©Mine Yoshizaki/KADOKAWA, BNP, TV TOKYO, NAS, BV

Coffee & Restaurant Aoyagi

Try fancy anime-themed dishes

With the establishment in 1950, Aoyagi started its business as a Japanese confectionery and transformed into a café over the years. Since this spot is located near Sunrise Studios, Aoyagi counts a large number of creative heads to its regular customers. The menu has some fun collaborations such as the "escafloat" (named after the Sunrise series "The Vision of Escaflowne") and special "Sergeant Keroro" cakes with images of the cute frog character on the packaging. The walls are decorated with original drawings by Sunrise animators and posters of the studio's latest projects. This is surely a "must stop" for any Sunrise fan!

Hours: 10am – 11pm **Closed:** 1st & 3rd Sunday of the month **Address:** Aoyagi Building 1F, 2-35-7 Kamiigusa, Suginami-ku, Tokyo **Access:** 2-min walk from Kami-igusa Station (Seibu Shinjuku Line)

Akebono Kodomo no Mori Park

A fairy tale-like park!

This beautiful park, built in 1997, is a fairy-tale brought to life. Cute and quirky constructions inspired by a Northern European magical story, invite you to explore the area and the amazing architecture inside. Take a trip to another world by spending a relaxing day at the park. Both kids and adults will love walking through the cute and amazing scenery.

Hours: 9am – 5pm **Closed:** Monday **Admission:** Free **Address:** 893-1 Azu, Hanno-shi, Saitama **Access:** 20-min walk from Motokaji Station (Seibu Ikebukuro Line)

Seibu Line's Must Do & See Spots

Amazing activities

that you can only experience only on the Seibu Line

Fun on the Seibu Line never stops! Explore uniquely Japanese areas, temples with fascinating histories and legends, and dine on the very best local cuisine. Enjoy our picks of the “best-of-the-best” that the Seibu Line has to offer!



Get Zen in an amazing setting

Heirin-ji Temple

At first glance, this temple area might seem simple, but it houses a rich and remarkable Zen history. Founded in 1375, it is one of Kanto's most famous ancient temples. The open space and simplicity is meant to enrich the architecture and calm visitors' minds. To this very day, the monks of Heirin-ji practice Zen Buddhism of the Rinzai school behind the doors of the temple. For people who don't follow a strict regime, the gardens are open to explore, with gorgeous flowers in spring and breathtaking foliage in autumn.

Hours: 9am – 4:30pm (last entry at 4pm) **Admission:** 500 yen (adults), 200 yen (children), (garden area is free) **Address:** 3-1-1 Nobitome, Niiza-shi, Saitama **Access:** 16-min bus ride from Higashi-Kurume Station (Seibu Ikebukuro Line) to Heirin-ji bus stop



Admire a spectacular temple garden

Nonin-ji Temple

Nonin-ji dates back to 1501, during the Muromachi period, however the garden is a masterpiece from the Momoyama era (1573 – 1603). With support from the Shogun Tokugawa Ieyasu, the temple thrived as a monastery. The garden skillfully incorporates the steep slope of the nearby mountain with the temple complex; in fact, it has been selected as one of the country's top hundred Japanese gardens. The temple grounds feature a bell tower, beautiful gates and a main hall with an impressive interior. Visitors can join Zen meditation sessions every Sunday from 9am – 12am (reservation required).

Hours: 9am – 4pm (until 5pm during summer) **Admission:** Free (300 yen to enter the grand hall and garden) **Address:** 1329 Hanno, Hanno-shi, Saitama **Access:** 20-min walk from Hannō Station (Seibu Ikebukuro Line)



Shrine with a famous relative

Higashi Fushimi Inari Jinja Shrine

This shrine dedicated to Inari is an extension of the famous Fushimi Inari Taisha shrine in Kyoto. Its name literally means “East Fushimi Inari Jinja”; it was officially divided from its Kyoto counterpart in 1929. Here you can find stunning vermilion gates lined up to make a series of winding tunnels. Stylized statues of Inari's messengers, kitsune (foxes), are present wherever you go and you will find small offerings (typically money, rice and cups of sake) at their feet.

Admission: Free **Address:** 1-5-38 Higashi Fushimi, Nishi-Tokyo-shi, Tokyo **Access:** 10-min walk from Higashi-Fushimi Station (Seibu Shinjuku Line)



The powerspot which heals any eyedisease

Arai Yakushi Baisho-in Temple

This temple, which used to be as popular as the Sensou-ji in Asakusa, is well known for its purported power to heal eyes and help with child rearing, and eye. It is also known as a famous hatsumode spot (where people make their first shrine visit of the new year), as well as a sakura viewing destination. The principal objects of worship at this temple are Bhaijayaguru (buddha who is able to cure all ills) and Cintamani-chakra, both combined in a single object and known as the great teacher of Buddhist philosophy.

Hours: 9am – 5pm **Admission:** Free **Address:** 5-3-5 Arai, Nakano-ku, Tokyo **Access:** 7-min walk from Araiyakushi-mae Station (Seibu Shinjuku Line)



The “cat came back” shrine for cat lovers

Azusamiten Jinja Shrine

This shrine has become a popular place to pray for the return of your cat ever since internationally renowned jazz pianist Yosuke Yamashita prayed here for the return of his cat. Miraculously, some say, his beloved pet came back safely the next day – after being gone a full 17 days! Even before that happened, though, this place was meant to worship cats, who were seen as protectors for the silkworm industry since they ate the rats who threatened the worms. To this day, people buy ema (wooden plaques) and hang them at the shrine to pray for their feline companions.

Hours: 7am-4pm **Address:** 4-1-1 Sunagawa-cho, Tachikawa-shi, Tokyo **Access:** 15-min walk from Musashi-Sunagawa Station (Seibu Haijima Line)

Enjoy shopping in Nogata Nogata Shotengai

Many neighborhoods in Japan offer a very distinctive style of shopping: shotengai (pedestrian commercial districts running along a single street). These shopping and amusement locales – usually filled with smaller, family-owned shops and restaurants, each with its own history and tradition – are some of the best places for foreigners to become part of the social scene and experience local lifestyle. Nogata is a perfect example!



Grilled ginger pork is the tradition

Nogata Shokudou

First opened in 1936, this spot has been serving the same grilled ginger pork set meal proudly ever since. Currently under its third owner – but still dedicated to bringing customers the same original flavor! – visitors are sure to enjoy a 100%-authentic lunch or dinner ...or both!

Hours: 11:30am – 2:45pm & 5:30pm – 11pm **Closed:** Thursday **Address:** 5-30-1 Nogata, Nakano-ku, Tokyo **Access:** 1-min walk from Nogata Station - South Exit (Seibu Shinjuku Line)



Scrumptious rice crackers: senbei

Kintoki Senbei

Kintoki Senbei is an irresistible senbei (rice crackers) shop which has kept up to the high standards of its original taste since 1933 while at the same time constantly developing new flavor combinations. Kintoki Senbei offers a broad range of beautiful and delectable senbei in different shapes, including their standard round one and a (highly recommended!) Mt. Fuji version.

Hours: 9am – 7pm **Closed:** Sun. **Address:** 5-30-1 Nogata, Nakano-ku, Tokyo **Access:** 2-min walk from Nogata Station (Seibu Shinjuku Line)



A mini-barbecue

Torifuji

Japanese are known for their love of yakitori (skewered meat), and this shop grills the skewers right before customers' eyes to guarantee the freshest taste. Choose from a variety of sauce coatings or simply have your choice grilled with salt. Open 12 hours a day, Torifuji proves that you can enjoy a mini-barbecue at any time of day!

Hours: 9am – 9pm **Closed:** any time of day. **Address:** 5-18-11 Nogata, Nakano-ku, Tokyo **Access:** 2-min walk from Nogata Station (Seibu Shinjuku Line)



A delicious frog-shaped sweet

Hinasakudo

Obanyaki (a hot pancake-batter cake baked with sweet azuki bean paste) is one of Japan's most popular pastries. While walking along the charming Nogata shotengai, you can sample obanyaki with an added extra: adorable frog-face designs! Word to the wise: The frog faces are always different, so – to enjoy the full experience – be sure to look before you leap and eat!

Hours: 9am – 7pm **Closed:** Irregular holidays, announced on website **Address:** 6-30-26 Nogata, Nakano-ku, Tokyo **Access:** 1-min walk from Nogata Station – North Exit (Seibu Shinjuku Line)

Seibu Line eating is a must

An floral take on Italian food Girasole

This lovely Italian restaurant's name translates to “sunflower” and its dishes have the same beautiful, bright, brilliant appearance as its namesake; original pastas and salads are perfectly arranged to highlight the contrasts between the ingredients. The chef only uses local produce, and they stock an original craft beer from Tokorozawa (Yarou Golden), which complements virtually everything on the menu. Most importantly, of course, taste never loses out to appearance in any way, bite after bite!

Hours: 11:30am – 2pm (lunch), 6pm – midnight (dinner) **Closed:** Tuesday. **Address:** Tokorozawa Array 1F, 18-22 Hiyoshi-cho, Tokorozawa-shi, Saitama **Access:** 5-min walk from Tokorozawa Station (Seibu Ikebukuro Line, Seibu Shinjuku Line)



Prepare to line up: The best ramen in town

Ramen Jiro, Hibarigaoka

With several branches, Ramen Jiro has achieved somewhat of a cult status. At all hours, visitors will find people lining up outside any branch to fill their stomachs with this – possibly challenging to finish? – ramen bowl. Homemade tonkotsu broth (stock made from pork bones), pork with plenty of fat, bean sprouts and, of course, ramen noodles make up this rich meal. And it's well worth the wait!

Hours: 11:30am – 2:30pm & 5:45pm – 9:15pm (Mon. – Fri.), 10:30am – 4:30pm (Sat.) **Closed:** Sunday. **Address:** Hibarigaoka Plaza 1F, 3-27-24 Yato-cho, Nishi-Tokyo-shi, Tokyo **Access:** 3-min walk from Hibarigaoka Station (Seibu Ikebukuro Line)



Kawagoe

Travel back to ancient Japan in an area lovingly called Koedo (literally meaning "little Tokyo") and pray for luck at the local shrines. During the Edo period, this city was one of the main suppliers of goods and services and thus a major trading post for Tokyo. It boomed as a commercial city and, because of its location away from Tokyo, Kawagoe City remained protected from natural and human disasters and retained most of its original form.

44-min from Seibu-Shinjuku Station to Kawagoe by Limited Express



◆ Kurano-machi (Old Storehouse Town)

Go back in time on the streets of Kawagoe, where lovely old warehouses have been turned into adorable shops and peaceful cafés. The famous Toki-no-kane (Bell Tower) makes you feel like a citizen of the Edo period! There is the museum store where you can go inside a kurazukuri (traditional warehouse) and learn about its structure, and a time-stood-still atmosphere on Ichibangai Street, which is lined with kurazukuri houses.

Access: 10-min walk from Hon-Kawagoe Station (Seibu Shinjuku Line)



◆ Kashiya Yokocho (Penny Candy Alley)

In Kawagoe's "Little Edo," you will find this quaint, stone-paved alley resonating with traditional flair. But what's most attractive about this street are about 20 traditional-style Japanese candy shops. Give your sweet tooth a nostalgic moment with a visit to Candy Alley!

◆ Kawagoe Festival



Beautiful floats with traditionally crafted puppets on top are pulled through the city, encouraged by a cheering crowd. The Kawagoe Festival started during the Edo Period and its spirit is still strong to this day. Every neighborhood has its own float with musicians aboard, and when the floats meet each other on the street, a music battle between the two ensues. Be sure to stay late, as this festival goes on well into the night. Food stalls are all around and everyone is in a festive mood.

Dates: 3rd Saturday and Sunday of October



◆ Kawagoe Hikawa Jinja Shrine

This cultural property of Saitama Prefecture houses the god of marriage. Not only can you pray here for a happy marriage, but you can also wish for romance to come your way. A fun play on the classic *omikuji* (fortune telling paper), are the red snapper fish ornaments with fortunes inside. During summer, there is a wind chime festival and you can stroll through a tunnel decorated with lovely chimes called "the tunnel of love".

Hours: 5:30am - 5:30pm (Mar. Apr. Sept. Oct), 5am - 6pm (May - Aug.), 6am - 5pm (Nov. - Feb.) Closed: always open Admission: Free Address: 2-11-3 Miyashitamachi, Kawagoe-shi, Saitama Access: 20-min walk from Hon-Kawagoe Station (Seibu Shinjuku Line)



◆ Kita-in Temple

This ancient temple of the Tendai sect of Buddhism was established in 830 and beloved by Japanese shoguns of the Edo period. Following a fire in the 17th Century, parts of Edo Castle were used to repair the damaged areas. Other highlights of the temple include the Senba Toshogu Shrine, one of the three major Toshogu Shrines of Japan. There are also the about 500 statues of Rakan (gohyaku rakan) of the Kita-in Temple. Each one has a different expression and it is said that there is always one that looks like you!

Hours: 8:50am - 4:30pm (March. 1st - November 23rd), 8:50am - 4pm (Nov. 24th - Feb. 28th) Closed: Dec. 25 - Jan. 8th, Feb. 2-3, April. 2-5 Admission: 400 yen (adults), 200 yen (children) Address: 1-20-1 Kosenbamachi, Kawagoe-shi, Saitama Access: 15-min walk from Hon-Kawagoe Station (Seibu Shinjuku Line)

Chichibu

With most of its natural areas a designated natural park, Chichibu boasts an amazing variety of activities. Whether you like seeing cultural sites in the city or exploring the great outdoors, there is something for everyone. A visit makes for a great breather for those who need to get away from the hustle and bustle of Tokyo.

◀ Chichibu Yomatsuri (Chichibu Night Festival)

Regarded as one of the three greatest float parade festivals in Japan and was added to the list of UNESCO World Heritage sites in 2016. It is Chichibu Shrine's annual festival, with a history of more than 300 years. Be sure to stop by on December 2nd and 3rd - you won't be disappointed.



◆ Chichibu is surrounded by mountains, Mt. Bukouzan. Originally wealthy because of its silk industry, the city's fabrics: particularly called *meisen*, gained popularity throughout Japan and the world from the mid Meiji era. You can look a cross the entire city area from Hitsujiyama Park Miharashi no Oka, which is also famous for its "shibazakura" (pink moss) in spring. Together with the re-opening of Seibu-Chichibu Station in spring 2017, an onsen facility called "Matsuri no Yu" was established right in front of the station.

◆ Steam Locomotive: The Paleo Express

The Paleo Express is a steam locomotive that takes you back in time. Cross the beautiful mountains and have time to relax while admiring the rural landscape; Picturesque views you've always wanted to see.

The Paleo Express is in service on weekends and holidays (please check the trains information before hand).



◆ Nagatoro

Just a short trip from Chichibu lies this beautiful geopark area with dynamic ravines, including the Iwadatami Rocks. River boating is one of the town's major attractions. Visit Hodosan Shrine; one of three major shrines in Chichibu, Where you can admire the colorful painted decoration of wood carvings under the roof of the main hall. Making your way up from the shrine, you will find a ropeway that brings you to the top of the mountain, giving you a beautiful view of seasonal flowers as you ascend.



◆ Mitsumine Jinja Shrine

Located high up Mt. Mitsumine(1,102m), this magnificent shrine has many unique features. For starters, is said to have been found by the warrior hero of Japan Yamato Takeru. The sanctuary of Mitumine is different in atmosphere from usual shrines. This Jinja has many historical buildings, such as Haiden (a hall of worship) decorated with richly colored carvings, the Zuijin-mon (Gate with guardians) and the Yohaiden (worship space).

Hours: 9am - 4pm Admission: Free Address: 298-1 Mitsumine, Chichibu-shi, Saitama Bus Information: There is a regular bus to Mitsumine Shrine from Seibu-Chichibu Station



- SEIBU RAIL PASS -

SEIBU RAIL PASS Lucky Charm Ticket

This ticket is designed as a lucky charm and only available for foreign tourists. Start your round trip from Seibu-Shinjuku or Takadanobaba Station until Hon-Kawagoe Station. If you plan to take the limited express train, another small fee of 500 yen is necessary for a one-way special-express ticket. This adorably designed ticket will be the best souvenir of your trip!

The Blue SEIBU RAIL PASS

Price: 1,200 yen
Place of purchase: assigned travel agencies overseas; Narita Airport
Contents: Round trip with the local train from Seibu-Shinjuku Station or Takadanobaba Station until Hon-Kawagoe Station. The one-day all-you-can-ride Koedo bus ticket is included in the blue SEIBU RAIL PASS. Don't forget to get your special LAIMO goods!

* The present exchange will take place at Hon-Kawagoe Station's Tourist Information Center. Hand in the tickets and receive original LAIMO goods, such as a luggage label and an ema sticker. (The present exchange is limited to one per person and is valid until Aug 31, 2017)

The Red SEIBU RAIL PASS

Price: 700 yen
Place of purchase: Seibu-Shinjuku Station and Takadanobaba Station
Contents: Round trip with the local train from Seibu-Shinjuku Station or Takadanobaba Station until Hon-Kawagoe Station. Get a LAIMO sticker with this ticket, or purchase the one-day all-you-can-ride Koedo bus ticket and more goods are waiting for you!

SEIBU 1Day Pass (+ Nagatoro)

By adding 500 yen to Seibu Railway's "All-you-can-ride Pass", you can even hop on and off the train between Nogami Station and Mitsumineguchi Station along the Chichibu Railway.

Price: SEIBU 1 Day Pass 1,000 yen / SEIBU 1 Days Pass + Nagatoro 1,500 yen

* Please refer to p.1 for more information

Saitama Platinum Route: Kawagoe-Chichibu-Nagatoro

Enjoy the Saitama Platinum Route! This useful travel plan promotes the best areas of Saitama by putting them in the spotlight. Using the Seibu Railway Line, you can travel easily between Chichibu, Nagatoro and Kawagoe. We recommend that you spend the first day visiting Kawagoe and enjoy Chichibu and Nagatoro on the second day.

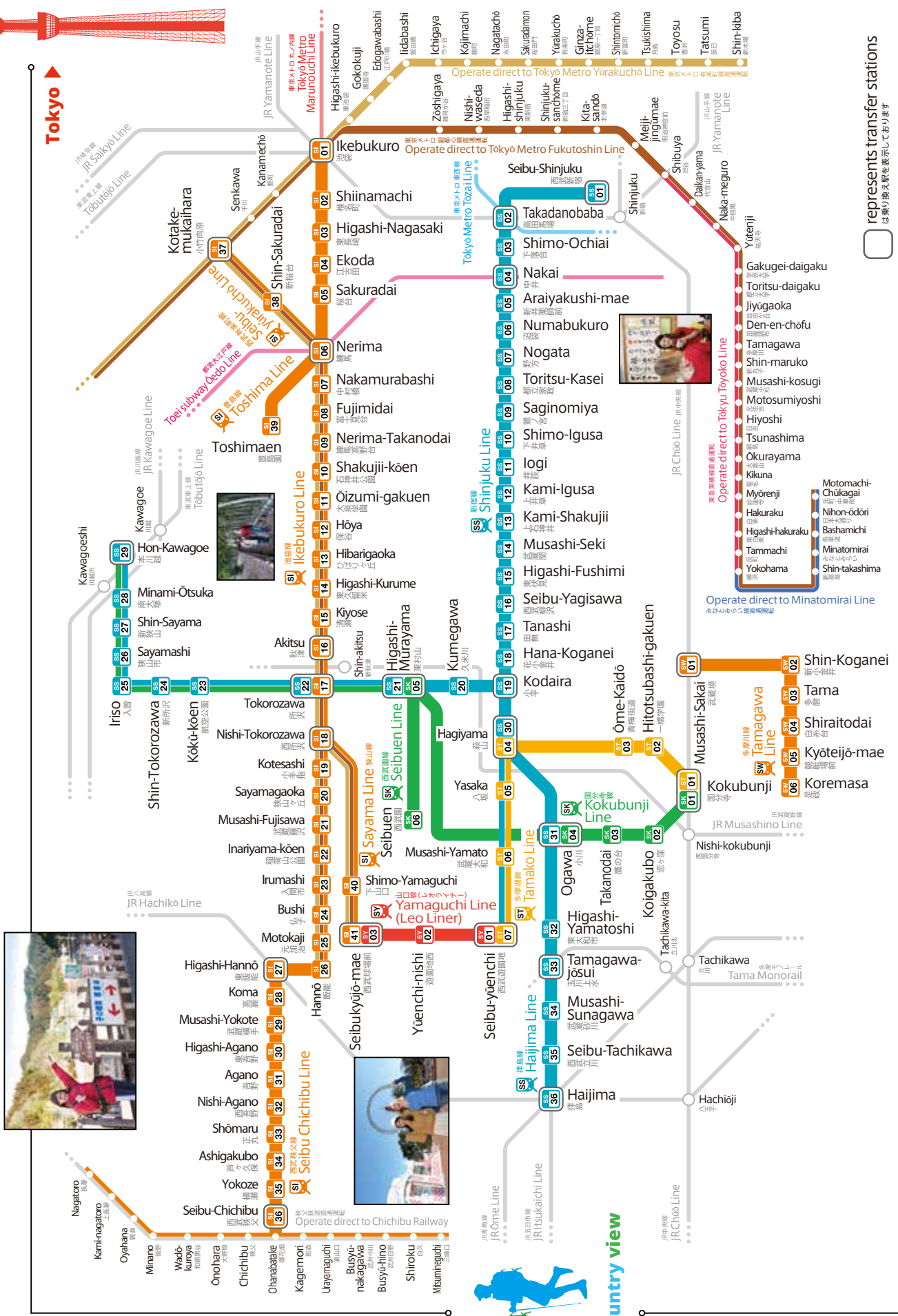
The 34 Kannon temples of the Chichibu pilgrimage

Kannon is the goddess of mercy and compassion who saves people from suffering and, normally, Kannon Temple tours consist of a total of 33 temples, like the 33 temples of Saigoku or the 33 temples of Bando. Chichibu has been granted one more temple, bringing the region's total to 100. The city is surrounded by many mountains that are believed to hold holy powers, and some of the temples are located in these areas. Get a pamphlet with handy route suggestions from the Chichibu Tourist Information Center and start your spiritual journey!

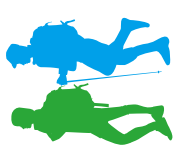




Tokyo



□ represents transfer stations
 は乗り換え駅を標示しております



country view