



Bolt On Tour - South Island Explorer

New Zealand

17th - 26th July 2022

Our Bolt On Tour continues on from after the third Test match versus New Zealand.

It is a long way to go to New Zealand and we figure that people would like to extend their stay for an additional week to explore brand new destinations.

Our South Island Explorer Bolt On Tour includes Dunedin, Christchurch, Kaikoura, Blenheim and Nelson with a number of activities and events included plus plenty of free time.

Bolt On Tour - South Island Explorer

Provisional Tour Itinerary

This tour itinerary is based on the Test matches having been played in Auckland and Wellington as per our main tour itinerary. If one of the matches takes place in Christchurch or Dunedin then we will revise the Bolt On tour accordingly to take in locations that you did not get to visit from the original itinerary. This will most likely be on the North Island and include Rotorua, Taupo and Napier. Prices quoted will not change if a match location changes.

TOUR COST INCLUSIONS

DAYS / NIGHTS	9 Days / 8 Nights in New Zealand
INTERNATIONAL FLIGHTS	Return international flights are included in your main tour booking. Dublin - Auckland - Dublin.
LOCAL FLIGHTS AND TRANSFERS	Two domestic flights: <ul style="list-style-type: none">• Auckland - Dunedin• Nelson - Auckland Executive coach transfers throughout.
HOTELS	<ul style="list-style-type: none">• 1 night at the 4* Rydges Hotel, Auckland• 2 nights at the 4* Scenic Hotel Southern Cross, Dunedin• 2 nights at the 4* Rydges Hotel, Christchurch• 1 night at the 4* Scenic Hotel Marlborough, Blenheim• 2 nights at the 4* Trailways Hotel, Nelson
MEALS & DRINKS	<ul style="list-style-type: none">• Breakfast each day.• Social evening hosted by Alhambra Rugby Club in Dunedin including a buffet and three drinks vouchers per person.• Late lunch at the fabulous Wither Hills winery in Blenheim.• End of tour dinner including drinks at the Tides Restaurant in Nelson.
ALSO INCLUDED <i>An optional list of activities that can be booked in advance will be distributed after making a booking.</i>	<ul style="list-style-type: none">• An incredible day trip from Christchurch on the famous Tranzalpine Express.• A two hour Whale Watching tour from Kaikoura.• A visit to Nelson Market, considered to be the best market in New Zealand.• Services of our friendly & experienced Rugby Travel Ireland staff throughout.

Sunday 17th July | Auckland

Continue your stay at the 4* Rydges Hotel, Auckland where you have stayed the last two nights. This will be your last day in Auckland city so we recommend heading down to the waterfront and relaxing - or bungee jump off the Sky Tower!

Monday 18th July | Dunedin

Check out this morning and transfer to Auckland airport for your flight to Dunedin. Executive coach transfer to the centrally located 4* Scenic Hotel Southern Cross and check in for two nights. The rest of the day is at leisure. Known as the Edinburgh of New Zealand, Dunedin wears its Scottish heritage with pride. Surrounded by dramatic hills and at the foot of a long, picturesque harbour, Dunedin is one of the best-preserved Victorian and Edwardian cities in the Southern Hemisphere.

Tuesday 19th July | Dunedin

Day at leisure. We suggest a visit to the Botanic Gardens, penguin watching, a tour of Speights Brewery or a trip to the stunning Lanarch castle (the only castle in New Zealand). This evening we have arranged a social get together with members of Alhambra Rugby Club, located in the city centre. Great hosts back in 2017 on our Lions tour. Buffet and three drinks are included.

Weds 20th July | Christchurch

Check out and depart for Christchurch. We will stop in Oamaru (1.5 hours) which is renowned as the Southern Hemispheres most complete Victorian streetscapes and 19th century architecture. We hope to catch up for a coffee with former Ireland Munster player, Mike Mullins. We will then stop in Timaru (1 hour) for lunch and then continue onto Christchurch (2 hours). Check into the centrally located 4* Rydges Hotel, Christchurch for two nights. Rest of the day at leisure. After the devastating earthquakes in 2011, Christchurch was rebuilt as a more creative and funky urban centre. Wander through the streets admiring the colourful murals that tell stories of the city's resilience and indomitable spirit.

Thursday 21st July | Christchurch You will remember this day! This morning you will be transferred to Christchurch train station for a day trip on the famous Tranzalpine Express. Experience the South Island's striking natural landscape by taking a train between Christchurch and Greymouth. Along this journey you'll see epic vistas, travel the edges of the ice-fed Waimakariri River, traverse the Southern Alps, and see miles of native beech forest.



Thursday 21st July (cont)

The TranzAlpine is one of the world's great train journeys covering 223 kilometres (139 miles) one-way, taking just under 5 hours. You'll traverse the majestic Canterbury Plains, to the backdrop of the mighty Southern Alps - the journey of a lifetime. There is an open viewing carriage and all carriages have huge windows to enjoy the amazing scenery. Food and drinks can be purchased onboard. After a one hour stop in Greymouth, the train returns back to Christchurch.

Friday 22nd July | Blenheim

Early check out and transfer (2 hours) to Kaikoura, a village caught between the rugged Seaward Kaikoura Range and the Pacific Ocean. It is famous for its whale watching trips which you are about to do! The main focus of this two hour boat trip is to locate and view the Giant Sperm whale. They average of between 1 to 2 whale sightings per tour due to the length of time the whales can stay submerged so viewing any more than 1 to 2 whales per trip is a real bonus. Around 80% of the world's whale and dolphin species migrate past this coastline so at any given time there is the opportunity for other species of marine mammals to be sighted such as Blue, Fin, Sei, Humpback, Minke, Pilot, Orca and Southern Right Whales, Common Dolphins, Bottlenose Dolphins, Southern Right Whale Dolphins, Elephant Seals and Leopard Seals.

It is then a 1 hour 45 min trip through stunning scenery to Blenheim where you will arrive at Wither Hills winery for a superlunch including wine tastings. From experience, we know that this will be a very social and relaxed event! When the time comes we will transfer (7 mins) to the 4* Scenic Hotel Marlborough, Blenheim and check in for one night. Blenheim is a scenic town situated in the heart of the wine-growing Marlborough region and framed by mountains. In and around Blenheim you'll find an array of restaurants, wineries, bars, and artisan food outlets.

Saturday 23rd July | Nelson

Check out and transfer (less than two hours) to Nelson, the hometown of Leinster and Ireland player, James Lowe. We are making sure that you arrive in time to be able to wander around the famous Nelson market that takes place every Saturday morning. It is recognised throughout New Zealand and the world, for its fine produce and quality artistry. Shop for fresh produce, gourmet foods, arts and crafts and share brunch under the warm Nelson sun.



Saturday 23rd July (cont)

Whilst you explore we will get your bags checked into your rooms at the 4* Trailways Hotel for two nights. The market is only 750m from the hotel so the day is at leisure and you can relax knowing that you can arrive at the hotel whenever you want!

Sunday 24th July | Nelson

Day at leisure. The Nelson Tasman region is renowned for its stunning natural landscapes, with diverse geography capturing everything from long golden beaches to untouched forests and rugged mountains. Perhaps it's the sun, perhaps it's the location, but Nelson Tasman has long been a magnet for creative people. With one of the largest numbers of working artists and galleries in the country, you'll find an array of craftspeople; traditional, contemporary and Maori. Visit their studios, taste the delicious locally made artisan products and find something extraordinary to take home with you.

This is the last full day in New Zealand so we have arranged an end of tour dinner, including drinks, at the superb Tides restaurant, located at your hotel, overlooking the waterfront. This will be a fun evening where everyone can simply relax and enjoy each others company.

Monday 25th July | Depart

Check out and transfer (10 minutes) to Nelson airport for your flight to Auckland to then connect onto your flight back home.

Tuesday 26th July | Dublin

Land back in Dublin after an incredible tour to New Zealand. Thank you for travelling with Rugby Travel Ireland and we hope to see you again on another tour soon!





SOUTH ISLAND EXPLORER BOLT ON TOUR - COST & PAYMENT TERMS

COST: €1,895 per person sharing.

PAYMENT TERMS: A €500 refundable deposit per person is required by 30th September 2021 and the balance due by 31st March 2022.

TOUR COST EXCLUSIONS

Single Supplement @ €595

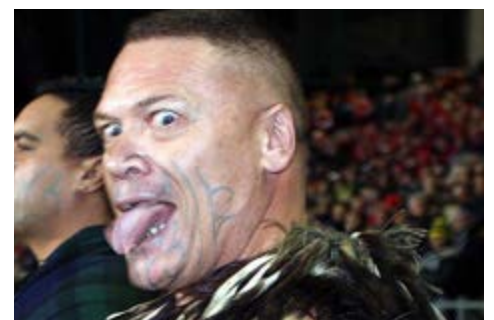
Travel insurance, passports and visas if applicable.

Upgrade to Business Class or First Class flights. Supplements apply and subject to availability.

Admission fees into sights of interest not included in the tour cost / itinerary. Personal expenses such as tips, telephone calls, beverages, all meals not mentioned under the inclusions and anything else of a personal nature.

CLICK HERE TO BOOK NOW!

Some images from our 2017 B&I Lions Tour to New Zealand



Additional Information

CORONAVIRUS CUSTOMER CHARTER

We truly appreciate that these are uncertain times when it comes to rugby and travel. No one knows what the future holds for sure, but we want to reassure you that all of us at Rugby Travel Ireland are ready and waiting to provide you with a trip of a lifetime. We will always do so with the health and safety of both our clients and staff at the very forefront of everything that we do. We are very conscious that you may have questions or reservations about travelling at this point in time, so we hope the following information and FAQs are of assistance and gives you peace of mind when booking with Rugby Travel Ireland. We'd like to reassure you that should the tour not proceed for the following reasons, you are entitled to a full refund (less €50 admin fee per person):

- If government advice changes and it becomes illegal to travel abroad.
- If the Department of Foreign Affairs (DFA) in Ireland / FCDO in the UK advises against non-essential travel abroad.
- If the government for the destination you're travelling to decides to enforce quarantine on arrival and there isn't the option to forgo this quarantine period by providing evidence of a negative COVID-19 test.
- If you have a booking to any destination that requires you to quarantine in a hotel on your return.

FAQs: A full list of our Frequently Asked questions can be found by [CLICKING HERE](#) and this will hopefully answer any queries that you may have. If not, please contact us by email at hello@rugbytravelireland.com or call us directly on +353 61 624 734.

FINANCIAL PROTECTION - BOOK WITH CONFIDENCE

OTP Travel Services Ltd T/A Rugby Travel Ireland (RTI) is fully bonded assuring you that your monies are secure at all times. If your tour package includes flights ex Ireland then we are bonded and licensed with the Commission for Aviation Regulation, Tour Operators Licence No. T.O. 260. Further details are available at www.aviationreg.ie. If your package flights are ex UK or it excludes flights, then in compliance with The Package Travel and Linked Travel Arrangements Regulations 2018, an insurance policy has been arranged with Travel & General Insurance Services Limited (T&G), to protect customers' prepayments in the unlikely event of our financial failure and paid in respect of non-ATOL flight inclusive packages sold to customers. This license and bond give you the financial security you require, along with that all important peace of mind.

INSURANCE



It is a condition of booking with Rugby Travel Ireland that you and any fellow travellers MUST have travel insurance in place. Your travel insurance should cover the cost of cancellation, medical expenses, loss of luggage or money, personal liability claims, participation in activities and costs of assistance (including repatriation) in the event of accident, injury, illness or death. You should check any exclusions and, in particular, that your policy covers you for the activities you want to undertake. We strongly recommend that you are covered from the time of booking as this may assist you in recovering monies paid in the unfortunate event of you having to cancel your trip. We recommend the services of our preferred travel insurance partner, Blue Insurance, and you can get a quotation directly from them as below:

Important Notice for ROI Residents: Blue Insurance travel insurance policy covers cancellation as a result of a positive diagnosis of Covid-19 and also cover medical expenses abroad as a result of Covid-19, provided that you are not travelling against DFA advice. All other claims relating to Covid-19 or Government Restrictions on travel are excluded.

Important Notice for UK Residents: Blue Insurance policy will not cover any claims caused by or relating to Coronavirus disease (COVID-19) apart from; Section A - Where You, Your Travelling Companion or Close Business Associate are diagnosed with Coronavirus Disease (COVID-19) and meet the conditions outlined in Section A or Section B - Emergency Medical and other Expenses, provided that you are not travelling against FCDO advice.

INSURANCE OPTIONS →

 ROI Residents Only
[Get Travel Insurance Quote](#)

 UK Residents Only 
[Get Travel Insurance Quote](#)

HOTELS

Prices are based on twin/double rooms with two people sharing. Triple/Family rooms can be quoted subject to availability. Single occupancy incurs a single room supplement as outlined in our costs. This is because we are charged on a per room basis, but we cost the package based on two people sharing that cost. Should we change your hotel we will advise you at the earliest opportunity, but we will always endeavour to offer a hotel of the same standard. If this is not possible, an alternative will be provided, and a credit note will be applied. All accommodation is on a bed and breakfast basis.

FLIGHT UPGRADES

Although the comfort and service offered by the airlines we use is excellent, you may wish to upgrade your flight to Business Class or First Class (neither are available for internal flights). You can request a quotation during the booking process.

CHANGES TO YOUR TOUR

RTI reserve the right to change / readjust the tour schedule, transportation, hotel accommodation and services indicated in the package. Promotions may end without notice. All tours are subject to availability. Please note that as with all our tours, this tour is subject to minimum numbers. Should these not be achieved you will be refunded in full and notified at least 12 weeks in advance.

IF YOU WISH TO CANCEL

Should you wish to cancel your booking, we will require notification in writing. Cancellation charges will be levied in accordance with the scale set out

in our full set of [Terms and Conditions](#). A summary of our cancellation provisions are as below:

More than 100 days Deposit(s) - Between 99 and 70 days 50% of total booking cost - Between 69 and 56 days 60% of total booking cost - Between 55 and 43 days 70% of total booking cost - Between 42 and 15 days 90% of total booking cost - 14 days or less 100% of total booking cost.

