



MAORI ALL BLACKS v IRELAND, HAMILTON

Bolt On Tour

TOUR COST INCLUSIONS

DAYS / NIGHTS	6 Days / 5 Nights in New Zealand
TRANSFERS	Executive transfers throughout. Waiheke Island return ferry crossing.
HOTELS	<ul style="list-style-type: none">• 3 nights at the <u>4* Crowne Plaza, Auckland</u> (includes day of arrival as landing at 05.05)• 2 nights at the <u>4* Novotel, Hamilton</u>
MEALS & DRINKS	<ul style="list-style-type: none">• Breakfast each day.• Waiheke Island Food & Wine Tour including lunch.• Pre match late lunch and drinks in Hamilton.

Friday 24th June | Dublin

Depart from Dublin airport with Qatar Airways (or similar) to Auckland.

Saturday 25th June | Transit

Sunday 26th June | Auckland

Land in Auckland, which is located on the North Island and is New Zealand's largest city. Executive transfer to the 4* Crowne Plaza Hotel in the heart of Auckland city centre and check in for three nights. Please note that the ETA of your flight is 05.05am so when you check in your room has been booked for that previous night, so it is ready for you on arrival. We know this is very important after your long flight. Rest of day at leisure.

Monday 27th June | Auckland

Today we have organised a food and wine tour on Waiheke Island to discover local produce and wines from top boutique vineyards on a fully-guided food and wine tour. Includes the 45 minute return ferry journey from Auckland, transfers on the island plus three wineries and a great platter lunch.

Tuesday 28th June | Hamilton

Check out of your hotel this morning and transfer to Hamilton (2 hours) in the Waikato region and home to the Chiefs. On arrival check into the 4* Novotel Hotel for two nights.

Wednesday 29th June | Auckland

PROVISIONAL: Match Day! Maori All Blacks v Ireland in Hamilton. Kick off 19.05. Return transfers included to the stadium. If this match takes place elsewhere or on another date, we will organise an alternative itinerary around this match at no additional cost.

Thursday 30th June | Auckland

Check out of your hotel this morning and transfer to Auckland. Check into the 4* Rydges Hotel in the heart of Auckland city centre for four nights. This is included as part of your Three Test tour.

Friday 1st July | Auckland

We have arranged a complimentary drinks reception this evening, hosted by Donal Lenihan and Alan Quinlan. The ideal time to mingle and get to know each other as the main tour group have arrived earlier today.





TOUR COST & PAYMENT TERMS

COST: €1,395 per person sharing.

PAYMENT TERMS: Full payment is required to secure your booking.

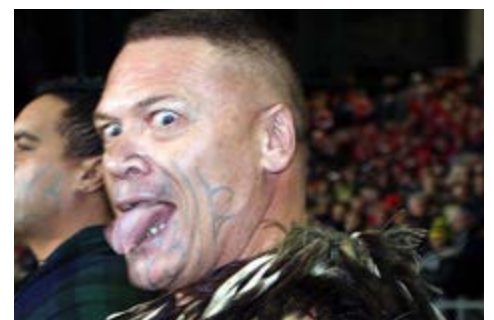
TOUR COST EXCLUSIONS

Single Supplement @ €495

Travel insurance, passports and visas if applicable.

Flights not included as this is a bolt on to the Three Test / North Island Bolt On Tour. Admission fees into sights of interest not included in the tour cost / itinerary. Personal expenses such as tips, telephone calls, beverages, all meals not mentioned under the inclusions and anything else of a personal nature.

SOME IMAGES FROM OUR 2017 B&I LIONS TOUR TO NEW ZEALAND



ADDITIONAL INFORMATION

CORONAVIRUS CUSTOMER CHARTER

We truly appreciate that these are uncertain times when it comes to rugby and travel. We want to reassure you that all of us at Rugby Travel Ireland are ready and waiting to provide you with a trip of a lifetime. We will always do so with the health and safety of both our clients and staff at the very forefront of everything that we do. We are very conscious that you may have questions or reservations about travelling at this point in time, so we hope the following information and FAQs are of assistance and gives you peace of mind when booking with Rugby Travel Ireland. We'd like to reassure you that should the tour not proceed for the following reasons, you are entitled to a full refund (less €50 admin fee per person):

- If government advice changes and it becomes illegal to travel abroad.
- If the Department of Foreign Affairs (DFA) in Ireland / FCDO in the UK advises against non-essential travel abroad.
- If the government for the destination you're travelling to decides to enforce quarantine on arrival and there isn't the option to forgo this quarantine period by providing evidence of a negative COVID-19 test.
- If you have a booking to any destination that requires you to quarantine in a hotel on your return.

FAQs: A full list of our Frequently Asked questions can be found by [CLICKING HERE](#) and this will hopefully answer any queries that you may have. If not, please contact us by email at hello@rugbytravelireland.com or call us directly on +353 61 624 734.

FINANCIAL PROTECTION - BOOK WITH CONFIDENCE

OTP Travel Services Ltd T/A Rugby Travel Ireland (RTI) is fully bonded assuring you that your monies are secure at all times. If your tour package includes flights ex Ireland then we are bonded and licensed with the Commission for Aviation Regulation, Tour Operators Licence No. T.O. 260. Further details are available at www.aviationreg.ie/.

INSURANCE



It is a condition of booking with Rugby Travel Ireland that you and any fellow travellers **MUST have travel insurance in place**. Your travel insurance should cover the cost of cancellation, medical expenses, loss of luggage or money, personal liability claims, participation in activities and costs of assistance (including repatriation) in the event of accident, injury, illness or death. You should check any exclusions and, in particular, that your policy covers you for the activities you want to undertake. We strongly recommend that you are covered from the time of booking as this may assist you in recovering monies paid in the unfortunate event of you having to cancel your trip. We recommend the services of our preferred travel insurance partner, Blue Insurance, and you can get a quotation directly from them as below:

Important Notice for ROI Residents: Blue Insurance travel insurance policy covers cancellation as a result of a positive diagnosis of Covid-19 and also cover medical expenses abroad as a result of Covid-19, provided that you are not travelling against DFA advice. All other claims relating to Covid-19 or Government Restrictions on travel are excluded.

Important Notice for UK Residents: Blue Insurance policy will not cover any claims caused by or relating to Coronavirus disease (COVID-19) apart from; Section A - Where You, Your Travelling Companion or Close Business Associate are diagnosed with Coronavirus Disease (COVID-19) and meet the conditions outlined in Section A or Section B - Emergency Medical and other Expenses, provided that you are not travelling against FCDO advice.

[INSURANCE OPTIONS →](#)

 ROI Residents Only
[Get Travel Insurance Quote](#)

 UK Residents Only 
[Get Travel Insurance Quote](#)

HOTELS

Prices are based on twin/double rooms with two people sharing. Triple/Family rooms can be quoted subject to availability. Single occupancy incurs a single room supplement as outlined in our costs. This is because we are charged on a per room basis, but we cost the package based on two people sharing that cost. Should we change your hotel we will advise you at the earliest opportunity, but we will always endeavour to offer a hotel of the same standard. If this is not possible, an alternative will be provided, and a credit note will be applied. All accommodation is on a bed and breakfast basis.

FLIGHT UPGRADES

Very limited availability.

CHANGES TO YOUR TOUR

RTI reserve the right to change / readjust the tour schedule, transportation, hotel accommodation and services indicated in the package. Promotions may end without notice. All tours are subject to availability.

IF YOU WISH TO CANCEL

Should you wish to cancel your booking, we will require notification in writing. Cancellation charges will be levied in accordance with the scale set out in our full set of [Terms and Conditions](#). A summary of our cancellation provisions are as below:

More than 100 days Deposit(s) - Between 99 and 70 days 50% of total booking cost - Between 69 and 56 days 60% of total booking cost - Between 55 and 43 days 70% of total booking cost - Between 42 and 15 days 90% of total booking cost - 14 days or less 100% of total booking cost.

