

Popey's Lions

Queenstown Trip

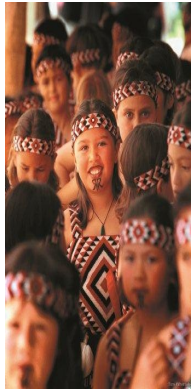


PROVISIONAL ITINERARY

Wednesday 26th June

07.00 Depart your hotel with Brent for the 08.40 flight direct to Queenstown arriving at 13.45 local time (flight time is 3 hours & 5 minutes). 23 kg luggage allowance included.

Short taxi ride (15 minutes) to the [4* Crowne Plaza, Queenstown](#). This is a great hotel with a fantastic central location, overlooking Lake Wakatipu and the Remarkables mountain range. Our guests stayed here during our Rugby World Cup tour and the Irish team also stayed here both during the RWC and the June summer series. We know it well and you won't be disappointed! You have the best rooms in the hotel with incredible Lake Views.



Crowne Plaza

Going Up - Skyline Gondola



This afternoon join Brent on a trip on the Skyline Gondola (5 minute walk from hotel) and watch the best views in the region unfold before your eyes as it carries you 450 metres above Queenstown and Lake Wakatipu to the top of Bob's Peak. En route you will enjoy a spectacular 220 degree panorama, with breath taking views of The Remarkables, Walter Peak, Cecil Peak, and Queenstown. On arrival the purpose built viewing platforms and outdoor terraces provide great photo opportunities. You can come back down on the gondola but instead we have included the Skyline Luge! With their unique braking and steering system, you're always in control, so you have the power to alter your course or speed at your will. 800 metres of fun, fast-paced freedom, the Skyline Queenstown Luge is a 'must do' activity when in Queenstown. Tonight Brent has organised a group dinner. We are sure this will then turn into a pub crawl!



Coming Down - Skyline Luge

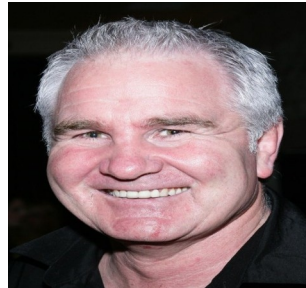
Popey's Lions

Queenstown Trip



PROVISIONAL ITINERARY

Thursday 27th June



Hi Folks

I hope you can join me for a trip over to my home country. You will love Queenstown and I am really looking forward to showing you around.

I thought the best thing to do today is to let you choose what you want to do. From high octane bungee jumps, amazing helicopter rides to wine tasting, the choice is yours. If hunting is your thing, deer hunting is good at that time of year. Just drop an email to Mark or Donal and then I could get some dialogue going, to see what your hunting expectations are.

The following few pages are a list of activities that I recommend but whatever you are looking to do, you can do it in Queenstown!

Just remember that it is winter over there in June and this is a skiing resort! The ski season would have just started and temperatures will average between 0°C (or colder) and 8°C with frosty mornings, clear blue skies and some snowfall. So bring appropriate clothing! All activity prices are at cost but could change a bit as suppliers price up for next year.

Look forward to meeting you all on the Lions Tour - its going to be awesome!

Cheers

Popey



Popey's Lions

Queenstown Trip



PROVISIONAL ITINERARY

Thursday 27th June (cont)

Trips or Flights over the Franz Joseph Glacier or Fox Glacier on the West Coast are possible, but a long way from QT and you would have to pay a good premium to do this and strike an excellent day weather wise to pull it off in June. My recommendation would be flying to and from Milford Sound. By flying at least one way you will see amazing Alps and a number of glaciers en route and of course Milford Sound never fails to deliver whatever the weather.

Milford Sound has a number of options, my favourite being the Drive/ Cruise/Fly option as the drive into Milford is as spectacular as the flight in my opinion and the perspectives are very different. It is an expensive way as you take a seat in the coach and the plane each way but worth it I think. You can drive each way or fly each way, and have the cruise in the middle. Here are some options:

COACH-CRUISE OPTION - Enjoy a luxury coach excursion from Queenstown and Te Anau to Milford and return. With a knowledgeable driver, we provide an interesting, informative commentary on the journey through to Milford Sound. Stop at all the fabulous points of interest along the way before enjoying a fantastic cruise aboard one of Mitre Peak Cruises specifically designed small boats. On your cruise out to the Tasman Sea and back you will see towering peaks, sheer cliffs, stunning waterfalls, lush rainforest and local wildlife such as seals and dolphins. You can also enjoy free tea or coffee for the duration of the cruise. A Picnic Lunch is available on board the cruise however this is a pre order option. You may elect to bring your own lunch. During the return journey we will stop in Te Anau where you will have time for a short stroll through this lovely town. Then sit back, relax and enjoy a locally made movie on the in-coach DVD system.

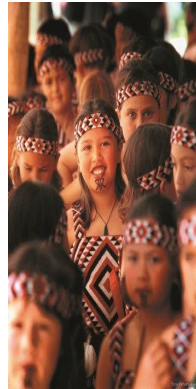
Cost: Queenstown-Milford-Return: \$175 (NZD) per person. Departs 6.30am. Returns 7.00pm

FLY-CRUISE-FLY OPTION - Fly from Queenstown to magnificent Milford Sound and enjoy spectacular views of the mountains, lakes and fiords of the Fiordland National Park. At Milford Sound your Mitre Peak Cruises launch travels the full length of Milford Sound. Your return flight takes you via the famous Sutherland Falls and glaciers of the Fiordland National Park.

Cost: \$450 (NZD) per adult. Departs 10am & 12 noon

COACH - MILFORD CRUISE - FLY OPTION - Enjoy a luxury coach excursion from Queenstown and Te Anau to Milford and return. With a knowledgeable driver, we provide an interesting, informative commentary on the journey through to Milford Sound. Stop at all the fabulous points of interest along the way. You then join the Scenic Cruise vessel that has purpose-built observation lounges and large decks, so you can be sure you'll get some great viewing opportunities. Keep a look out for wildlife such as seals basking on the rocks. During the cruise, the friendly crew provide commentaries in several languages and point out highlights such as Mitre Peak and the Pembroke Glacier. Returning to Queenstown a hidden landscape unfolds below, revealing glacial lakes, waterfalls, deep valleys and cloud-piercing summits. Our aircraft are specially selected for the mountainous terrain of Fiordland and Mount Aspiring National Parks. All the pilots are specifically trained for alpine flying and provide an informative commentary along the way.

Cost from \$596 (NZD) per adult. Departs: 6.55am. Flights are weather permitting



Popey's Lions

Queenstown Trip



PROVISIONAL ITINERARY

Thursday 27th June (cont)

Bungy Jumps

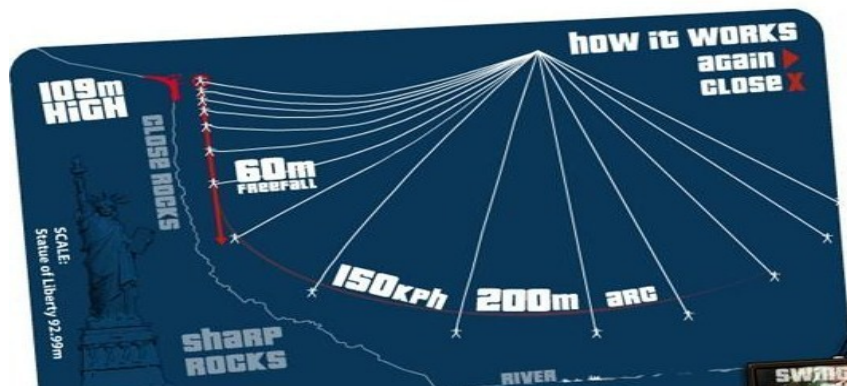
Nevis Bungy: New Zealand's Highest. Jump from a high wire cable car 134m. Massive Ground Rush of 8.5 seconds. Private Mountain Access Road - 4WD ONLY. Free Jump T-shirt. Price \$260 (NZD)

Kawarau Bungy: World's 1st Commercial Bungy Jump. 43m Jump off the historic Kawarau Bridge. Queenstown's Only Tandem Bungy. Bob above the water, touch it or get dunked! Free Jumper T-shirt. Price \$180 (NZD)



The Ledge Bungy: 400m Above Queenstown. Bungy in the dark through winter with our Night Jumps. Twist-flip-dive, the possibilities are endless. Harness Jumps - great if your feet like to be free. Free Jump T-shirt. Price \$180 (NZD)

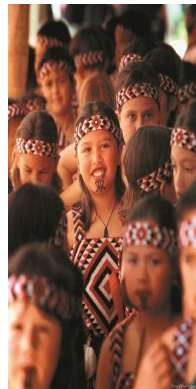
Shotover Canyon Swing



Definition: Highly adrenalized sensation that is created by the unique combination of natural geography and ingenuity. The rush starts at our platform as you leap or launch from the 109 metre high cliff edge. Gravity accelerates you for 60 metres of free-fall just metres from the vertical cliff face. Reaching speeds of 150kph as the canyons rocks rush towards you before the ropes smoothly swing you past. Whatever your jump style, this is 200 metres of very scary CANYON RUSHTM – additional underpants recommended!

From Queenstown you will travel 10 minutes in one of our 4WD vehicles, take a 3 minute bush walk and you'll arrive at our private Swing site. Allow 2.5hr return.

Price \$199 (NZD). Extra Jumps \$39 (NZD)



Popey's Lions

Queenstown Trip



PROVISIONAL ITINERARY

Thursday 27th June (cont)

Tandem Skydive



As spectacular a skydive as you could do anywhere in the world. Choose to skydive from any of the following altitudes and free-fall at Terminal Velocity; 200kph.

15,000ft - 60 seconds free-fall / 12,000ft - 45 seconds free-fall / 9,000ft - 25 seconds free-fall. You will experience a 5 minute ride, landing safely back at the skydive drop zone.

Price: 15,000ft - \$429 (NZD) per person / 12,000ft - \$329 (NZD) per person / 9,000ft - \$269 (NZD) per person

Paragliding/Parapenting



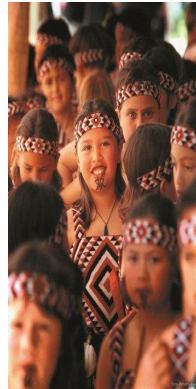
During the winter months (June - September) the chairlifts allow us access to the 5,400ft snow launch. The views off the summit at Coronet Peak ski field are incredible, plus we have got 1,100 m vertical to play with. This is twice the height of the Queenstown gondola - finest Queenstown Paragliding experience!

Price: \$225 (NZD) per person. Average flight: 25 mins Departs: Free licensed transport from Queenstown and return. Allow 2 ½ hours

Skyline Gondola Tandem Flights

The original Queenstown Tandem Paraglide! Takeoff from the top of the Skyline Gondola and experience the ultimate in free flight as we soar over Queenstown. Spectacular views of Lake Wakatipu!

Price \$199 (NZD) per person. Allow 1 Hour round trip - includes a set of in-flight photos



Popey's Lions

Queenstown Trip



PROVISIONAL ITINERARY

Thursday 27th June (cont)

Jet Boating



Shotover Jet - Take a unique breath-taking ride through dramatic and narrow Canyons, and hold on tight for Queenstown's only exhilarating full 360 ° spins. 'Can you handle the canyons?' with award winning Shotover Jet, 'The World's Most Exciting Jet Boating Ride' and the only company permitted to operate in the spectacular Shotover River Canyons. Duration / Trip Times Allow 1 hour 30 minutes Queenstown return including Jet Boat ride 'Big Red' Jet Boats departures up to every 15 minutes and operate every day (weather and river conditions permitting) from Queenstown.

Price: \$129 (NZD) per person



Dart River Jet Boating - Jet Boat Action • Guided Ancient Forest Walk • Back-Country 4WD. The 'Wilderness Safari' is a diverse adventure exploring spectacular 'World Heritage' wilderness within Mt Aspiring National Park through a combination of exhilarating wilderness jet boating, informative guided ancient forest walk and back-country 4WD safari vehicle. Surrounded by awe-inspiring peaks and mysterious hidden valleys shrouded in native Beech forest, your specialist guides will bring to life the variety of landscapes, vegetation and wildlife within this unique area, as well the captivating stories of the original Maori and early pioneers. Wear warm clothing plus hat, gloves, windproof outer jacket and sunglasses. Please ensure you wear suitable supportive footwear. Guided walk requires moderate fitness. The Wilderness Safari includes complimentary return shuttle from Queenstown. Six hours in total departing daily (weather permitting) at 7:40am and 11:40am from Queenstown.

Price: \$219 (NZD) per person



Popey's Lions

Queenstown Trip



PROVISIONAL ITINERARY

Thursday 27th June (cont)

White Water Rafting



Winter Heli-Rafting - Jump aboard your twin-engine turbine helicopter for a rollercoaster ride of excitement as you make your way to the rafting "put in" point. Look down upon the Wakatipu Basin, historic Skippers road and Coronet Peak Ski Area before flying up the spectacular Shotover River. Check out the white water rapids you're about to encounter from above and enjoy the site of one of the world's richest gold strikes. Helicopter is the only access to the Shotover River during the winter. The Shotover River runs through Skippers Canyon and was one of the richest gold bearing rivers in the world.



With your river guide your white water rafting journey begins over peaceful waters at first, you'll head towards the exhilarating rapids of the lower canyon. The adrenalin pumps as you paddle Rock Garden, After Shock, Sharks Fin, Toilet, Pinball and Jaws to name but a few. Raft the 170m Oxenbridge Tunnel before shooting Cascade Rapid to complete your adventure. Before returning to Queenstown, enjoy a sauna and hot shower at Cavell's Rafting base and perhaps treat yourself to a much deserved hot chocolate, beer or snack at the licensed cafe. Includes transfer from Queenstown downtown to rafting base. Full wetsuit rafting clothing and safety equipment included. Extensive safety briefing. Rafting on the Shotover River. Hot showers and sauna. Transfer/ return travel to Queenstown downtown.

Price \$195 (NZD) per person



Popey's Lions

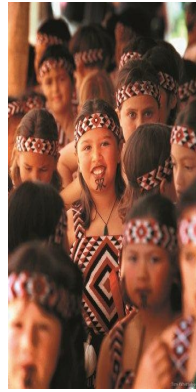
Queenstown Trip



PROVISIONAL ITINERARY

Thursday 27th June (cont)

Combo Trip - "Shotover Triple Challenge"



The Triple Challenge is a great value outdoor adventure package, combining three awesome activities: an exhilarating jetboat ride on the world-famous Shotover Jet; action packed helicopter ride; and adrenaline fuelled white water rafting adventure.

- Transfer from Queenstown downtown to rafting base
- Shotover jet boat ride and Safety Equipment
- Full wetsuit rafting clothing and Safety Equipment
- Transfer to Heli-pad
- Transfer by Helicopter to rafting put in point
- Extensive Safety Briefing
- Rafting on the Shotover or Kawarau River
- Hot Showers and Sauna
- Transfer/ return travel to Queenstown Downtown
- Winter Departures: 8.15am and 12.15pm
- Duration ½ day approximately 4.5hours

Price \$384.00 (NZD) per person

Popey's Lions

Queenstown Trip



PROVISIONAL ITINERARY

Thursday 27th June (cont)

Skiing/Snowboarding at Coronet Peak

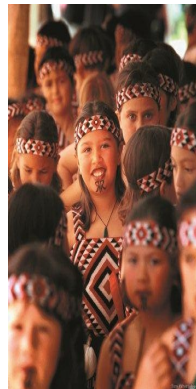


Enjoy a fantastic day on the slopes with stunning scenery and terrain to suit everyone.

Package price for the day includes:

- Ski or Snowboard hire and associated boots / poles
- Clothing - Jacket, Pants and gloves
- Transport from Queenstown to Coronet Peak - return (30 mins each way).

Price \$185 (NZD) per person.



Popey's Lions

Queenstown Trip



PROVISIONAL ITINERARY

Thursday 27th June (cont)

Wine Tours



QUEENSTOWN WINE TRAIL - ORIGINAL

Departs daily at 12.30 pm. Allow 5 hours.

For first time tasters or wine connoisseurs join us for an introduction to four Queenstown wineries and a tour through an underground wine cellar. Your friendly, knowledgeable wine guide and winery personnel will offer an understanding of the unique Central Otago wine growing conditions and wines tasted.

The Original Wine Tour operates all year round and is an all weather activity. Each season offers a unique experience: al fresco dining in summer, grape harvest in autumn and cosy winter tastings.

TOUR INCLUDES: Tastings at four wineries in the Queenstown and Gibbston Valley wine regions Unique wine tasting tour through New Zealand's largest underground wine cellar Time to relax at wine bar or Cheesery

View Queenstown's original AJ Hackett Bungy jump and the historic Kawarau Bridge

Pick up from accommodation or central Queenstown Time for optional lunch (own expense) at Gibbston Valley Winery

Price \$129 (NZD) per person

Gourmet Wine Tour • 9.30am-4.30pm • Daily

A relaxed day of fine cuisine, good company, sampling local cheeses and tasting premium cool-climate wines.

Tasting at 5 vineyards in the Gibbston Valley, Cromwell and Bannockburn regions plus a tour through New Zealand's largest underground wine cave

A tasting of local cheeses at one of the vineyards

A delightful platter style lunch at one of our venues

Visit to historic Old Cromwell Town (time and weather permitting)

A stunning drive through the Kawarau Gorge whilst learning about the early pioneering history of this rugged region.

View the historic Kawarau Bridge and the original AJ Hackett Bungy jump

Price \$215 (NZD) per person



Popey's Lions

Queenstown Trip



PROVISIONAL ITINERARY

Thursday 27th June (cont)

After a great day of activities enjoy a relaxing sauna back at the hotel followed by a great dinner out with Brent.

Friday 28th June

Your flight is at 13.50 so this gives you time to relax or even do another of the activities mentioned!

Depart the hotel at 12.30 for your flight back home. The flight goes via Christchurch (50 minute stop over) and then onto Melbourne where you land at 17.35. Transfer back to your hotel.

Have a good nights sleep ready for the key second Test Match tomorrow!

Tour Cost

€1,090 per person sharing (twin/double)

Includes:

Return flights: Melbourne - Queenstown (including taxes & 23 kg luggage allowance)

Two nights B&B (sharing) in a Lake View Room at the 4* Crowne Plaza Hotel

Trip up on the Skyline Gondola and down on the Skyline Luge

Dinner both nights with Brent including a half bottle of wine per person

Transfers from Melbourne Hotel to Airport (return) and Queenstown Airport to Hotel (return)

Excludes:

Any optional activities as detailed

Single Supplement - €175

Notes

To make a booking for the tour (and activities if required) please contact us at:

info@trevorbrennanrugbytours.com

LoCall 1890 253 171 / + 353 61 624734

